

Your perfect Window & Door partner for Suited Hardware

WINDOWS | DOORS | CONSERVATORIES | FLUSH CASEMENT



Contact Us

Yeomanry Road,
Shrewsbury,
Shropshire,
SY1 3EH

Email: info@utfl.co.uk
Tel: 01743 442244



Window Range

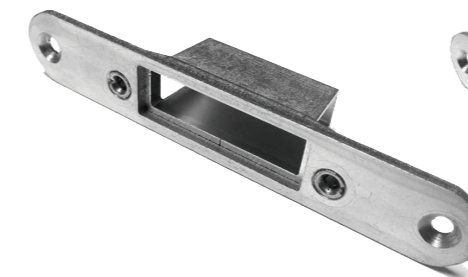
Elite Individual Keeps for 2H Composite Lock

A high quality range of individual keeps specifically designed to suit our Elite composite lock.

Features:

- ✓ Adjustable on hook and centre latch keep.
- ✓ Die cast bucket on hook keep for added strength.
- ✓ Elite Silbear Surface Protection exceeding **480 hours salt spray** exposure (EN1675 Grade 5).
- ✓ 10 Year Guarantee.

Hook Keep



Centre Latch Keep



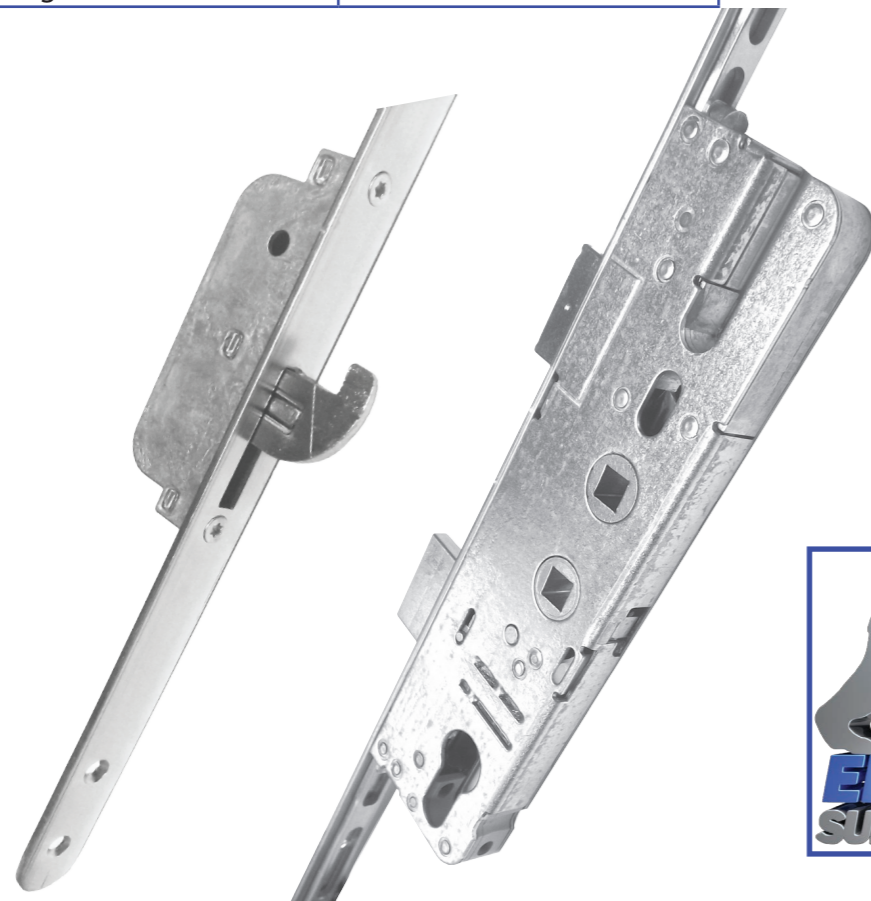
Elite Composite 2 Hook Lock

A premium 2 hook lock suitable for composite and timber doors. Can be used with the DGS low profile composite door restrictor. Has PAS 24 and Secured by Design accreditation.

Features:

- ✓ 20mm Face Plate.
- ✓ 35mm or 45mm Backset option.
- ✓ Radiused Ends.
- ✓ Dual Spindle as standard, giving total flexibility.
- ✓ Designed to meet Secured by Design requirements (PAS24) and Document Q.
- ✓ Elite Silbear Surface Protection exceeding **480 hours salt spray** exposure (EN1675 Grade 5).
- ✓ 10 Year Guarantee.

Application Range	
Sash Rebate Height	1850mm - 2075mm
Handle Height	910mm



Elite Standard Stays

Our BSI, BBA and SBD accredited range, with vent arm locating more positively into the end cap ensuring greater weather tightness and security.

Features:

- ✓ Handed.
- ✓ Enhanced security and improved weather tightness.
- ✓ Metal End Cap.
- ✓ Manufactured in ferritic and austenitic stainless steel.
- ✓ Tested as part of a window system to CE Standard.
- ✓ BSI approved.
- ✓ BBA approved.
- ✓ SBD accredited.
- ✓ Suitable for Document Q.



Elite Stays with Integrated Restrictor

All the features of the standard with a built in Safety Restrictor.

Opening windows carry the risk that a person might fall out of them. A safety restrictor makes this much more unlikely by initially restricting the opening to a fixed position. Opening beyond this initial position is achieved by operating the safety restrictor release mechanism. It is strongly recommended that safety restrictors are used in pairs.

Features:

- Handed.
- Enhanced security and improved weather tightness.
- Metal End Cap.
- Manufactured in ferritic and austenitic stainless steel.
- Built in Safety Restrictor.
- Tested as part of a window system to CE Standard.
- BSI approved.
- BBA approved.
- SBD accredited.
- Suitable for Document Q.



Elite One Piece Keep Cover Caps

An optional cover cap to cover fixing holes. Plain grey or printed.

Features

- Standard colour grey to match one piece keep.
- Flexible and full colour printing options.



Custom Cover Caps

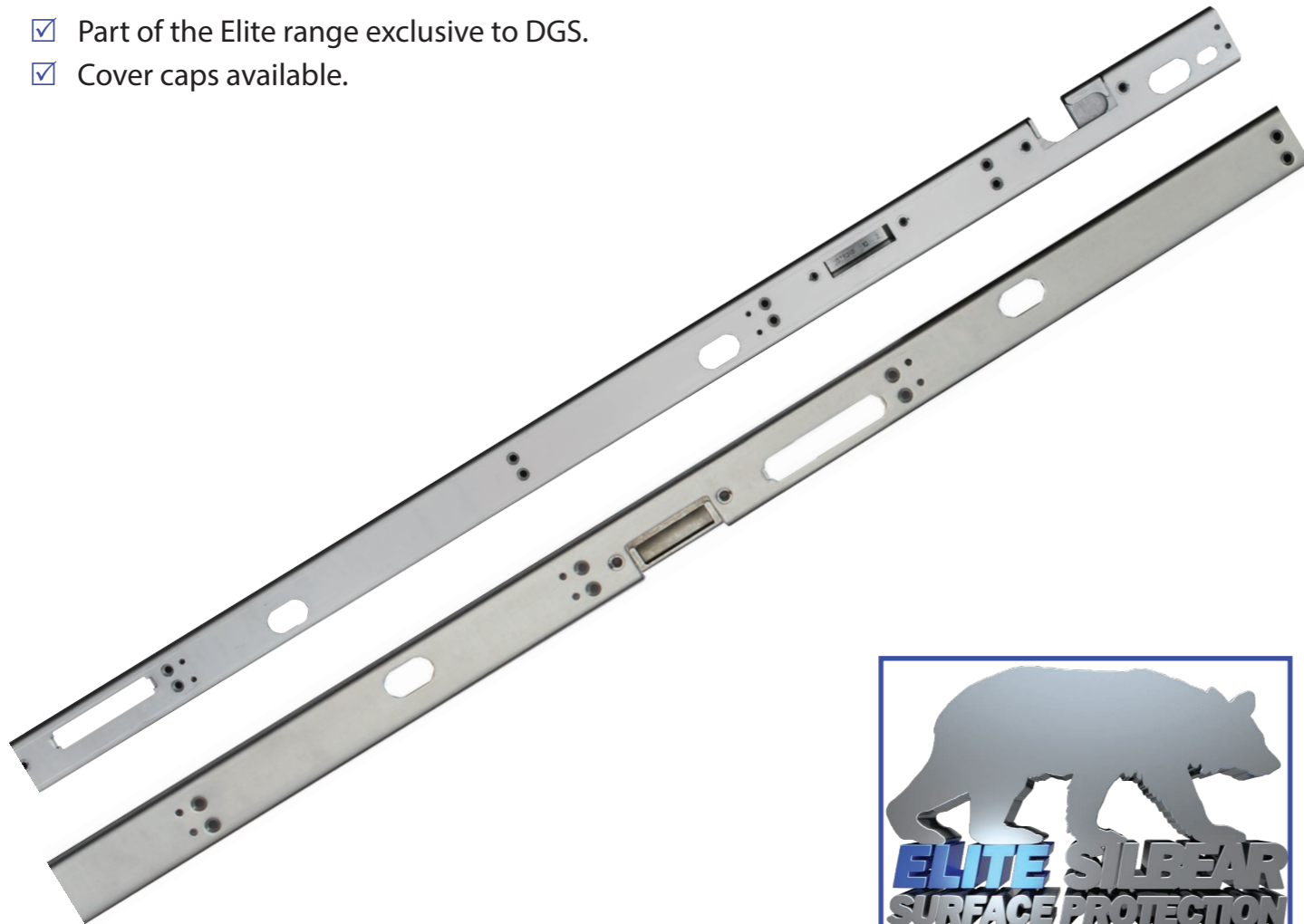
- Available in 1, 2 or 3 print colours.
- Printed with a design of your choice.
- Fits onto the Elite One Piece Keep.

One Piece Keep for Elite Compact 2H 2R Lock

A high quality one piece keep to suit the Elite Compact lock. Its robust and durable design, together with full adjustability ensures this exclusive keep would meet all fabrication demands.

Features

- ✓ Adjustability on Hook and Cam.
- ✓ Large 35mm width Face Plate.
- ✓ Heavy duty gauge steel for superb durability.
- ✓ Die Cast Buckets for added strength.
- ✓ Elongated fixing holes to ensure you can always fix into brick substrate.
- ✓ 2 Additional elongated fixing holes top and bottom for adjustment when setting the keep.
- ✓ Separate Profile Packers to cover a wide range of profiles.
- ✓ Elite Silbear Surface Protection exceeding **480 hours salt spray** exposure (EN1675 Grade 5).
- ✓ 10 Year Guarantee.
- ✓ Part of the Elite range exclusive to DGS.
- ✓ Cover caps available.



Elite Egress Stays (Standard)

The egress range is designed for fire escape and emergency exit, by providing the user with maximum clearance in the event of an emergency. Available in ferritic steel only.

Features:

- ✓ Gives maximum exit clearance.
- ✓ Metal End Cap.
- ✓ BSI approved.
- ✓ BBA approved.
- ✓ SBD accredited.
- ✓ Suitable for Document Q.



Elite Egress Stays with Easiclean

An egress stay with an easiclean function which allows you to reach and clean the external face of the window from inside.

Features:

- ✓ Gives maximum exit clearance.
- ✓ Manufactured in ferritic and austenitic stainless steel.
- ✓ Built in easiclean function.
- ✓ Metal End Cap.
- ✓ BSI approved.
- ✓ BBA approved.
- ✓ SBD accredited.
- ✓ Suitable for Document Q.



Elite Compact 2 Hook 2 Roller Lock

A quality 2 hook, 2 roller extendable door lock for use in applications where a shorter rebate is required.

Features:

- ✓ Can achieve min height of 1860mm without shootbolt and 1805mm with shootbolt.
- ✓ Suitable for French Door applications.
- ✓ Dual Spindle as standard, giving total flexibility.
- ✓ Designed to meet Secured by Design requirements (PAS24) and Document Q.
- ✓ Extendable.
- ✓ Elite Silbear Surface Protection exceeding **480 hours salt spray** exposure (EN1675 Grade 5).
- ✓ 10 Year Guarantee.

Application Range	
Sash Rebate Height	1805mm - 2070mm
Handle Height	1050mm

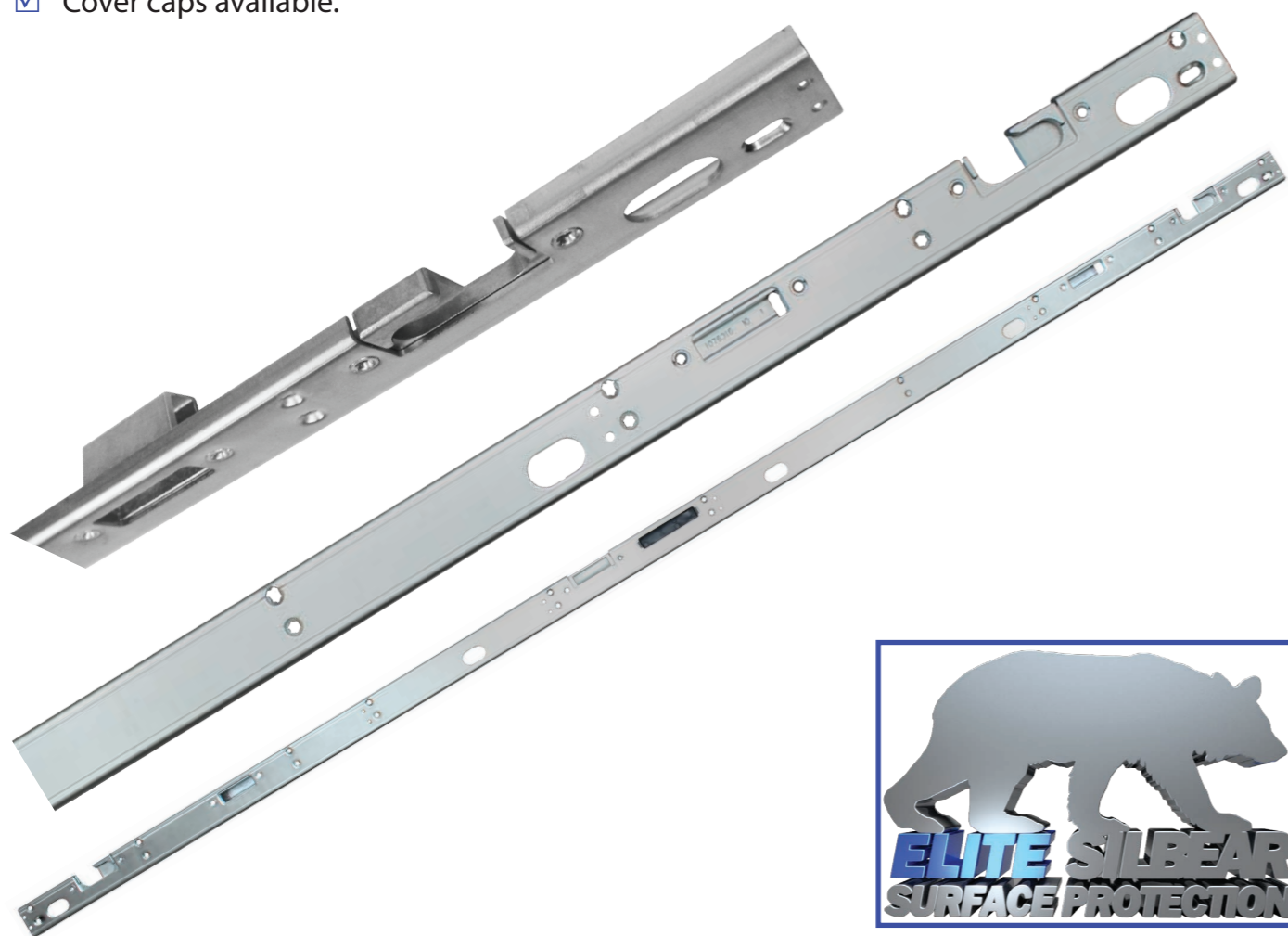


Elite One Piece Keep for Security 2H 4R Lock

A high quality one piece keep to suit the Elite Security lock. Its robust and durable design, together with full adjustability ensures this exclusive keep would meet all fabrication demands.

Features

- ✓ Adjustability on Hook and Cam.
- ✓ Large 35mm width Face Plate.
- ✓ Heavy duty gauge steel for superb durability.
- ✓ Die Cast Buckets for added strength.
- ✓ Elongated fixing holes to ensure you can always fix into brick substrate.
- ✓ 2 Additional elongated fixing holes top and bottom for adjustment when setting the keep.
- ✓ Separate Profile Packers to cover a wide range of profiles.
- ✓ Elite Silbear Surface Protection exceeding **480 hours salt spray** exposure (EN1675 Grade 5).
- ✓ 10 Year Guarantee.
- ✓ Cover caps available.



Elite Twin Cam

A high security espagnolette system using twin cam operation with PAS 24 and SBD accreditation which reinforce the performance and quality of this range. Suitable for use with most PVC, timber or aluminium windows with eurogroove.

Features:

- ✓ For ease of fabrication there is **One Universal Routing** detail across all Elite casement products.
- ✓ Security cams to provide extra security.
- ✓ Easy adjustment of cams to achieve perfect weather seal.
- ✓ Elite Silbear Surface Protection exceeding **480 hours salt spray exposure** (EN1675 Grade 5).
- ✓ High security level.
- ✓ SBD accreditation.
- ✓ BSI approved.
- ✓ PAS 24.
- ✓ 10 Year Guarantee
- ✓ Suitable for Document Q.



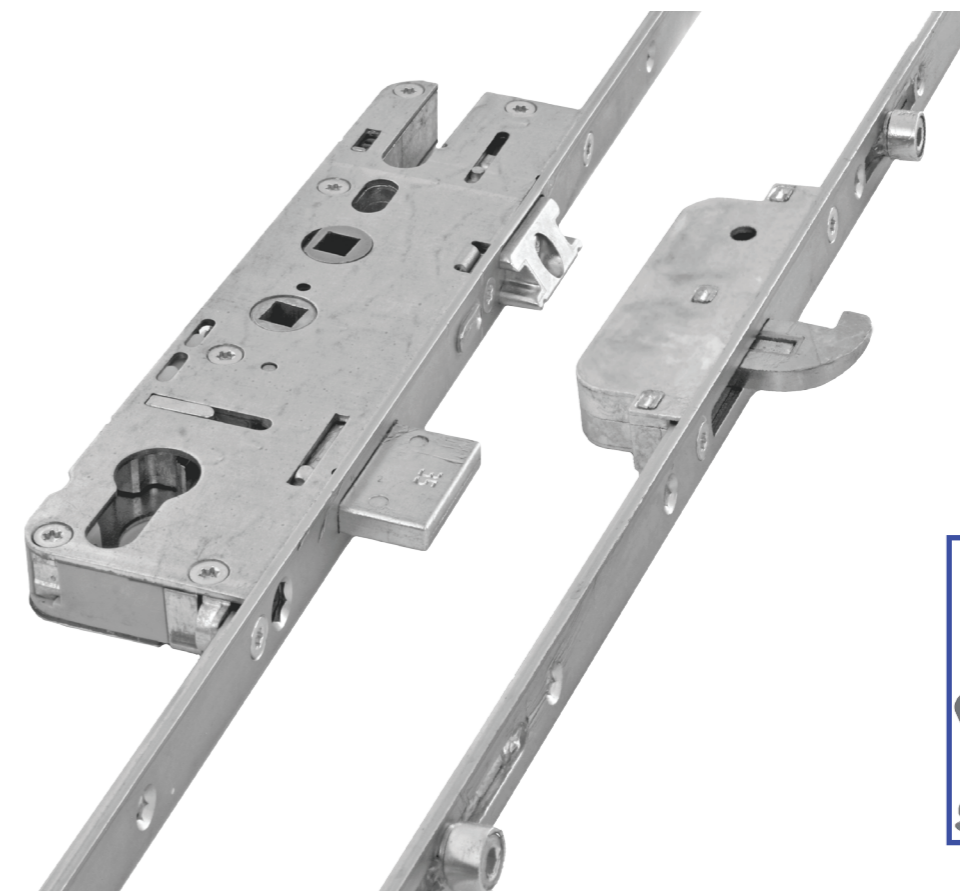
Elite Security 2 Hook 4 Roller Lock

A high security 2 hook, 4 roller extendable door lock with PAS24 and Secured by Design accreditation.

Features

- ✓ Bi-directional steel hooks for added security.
- ✓ 4 Rollers positioned along the length of the lock for even compression.
- ✓ Dual Spindle as standard, giving total flexibility.
- ✓ Designed to meet Secured by Design Requirements (PAS24) and Document Q.
- ✓ Extendable.
- ✓ Elite Silbear Surface Protection exceeding **480 hours salt spray** exposure (EN1675 Grade 5).
- ✓ 10 Year Guarantee.

Application Range	
Sash Rebate Height	1850mm - 2200mm
Handle Height	1050mm



Door Range